



Alero™



adjustability and support

Alero combines comfort and performance with exceptional value and design.

In today's modern office where computer related activities are crucial, it is extremely important that one's choice in seating encourages comfort and productivity. Alero's fully upholstered or breathable mesh back and comfortable padded seat create the perfect blend of comfort and design. Many adjustable features and a choice of functional mechanisms ensure the chair will perform well. Choose a sophisticated Multi-tilter for computer intensive activities or a tilter chair for casual offices or meeting rooms. All chairs feature an adjustable lumbar support that allows the user to customize the comfort of the back.



1960-2 High Back Knee-Tilter with adjustable Headrest, shown in GIG GIG1 Stone



1961-2 High Back Knee-Tilter (no Headrest), shown in GIG GIG1 Stone. Also, shown on cover in Momentum OHS Warmth OH12



1966-4 Upholstered High Back Tilter with adjustable Headrest, shown here and on cover in Sprinkle S104 Copper



Alero™

Details



Headrest is height and angle adjustable to suit your personal preferences.



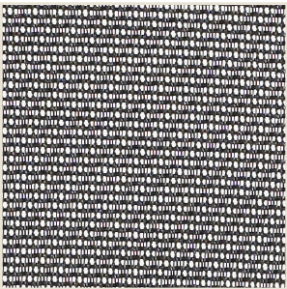
Arms are height adjustable and feature a "sliding armcap" that can be moved forward and rearward to provide better support for keyboarding.



Chair frame Fibre glass reinforced nylon frame is very durable.



Lumbar support can be moved up and down. Depth can be adjusted by turning the knob.



Back support is made from elasticized, breathable mesh material that provides comfortable support that contours to your body.



Standard Base is fiberglass reinforced black Nylon. Polished aluminum base is optional.
Casters are available for both carpet or hard surfaces.

Ergonomic Features



Knee-Tilter Tilt tension adjustment with infinite position tilt-lock control. Seat height adjustment. Manual seat depth adjustment.



Multi-Tilter Back angle adjustment. Infinite tilt-lock control. Tilt tension control. Seat height adjustment. Manual seat depth adjustment.








Tilt Rearward tilt with upright position tilt-lock. Tilt tension control. Seat height adjustment. Manual seat depth adjustment.




Operator Two lever seat and back angle adjustment. Seat and back adjust independently and lock in any position or free float. Manual seat depth adjustment.



Task Manual seat depth adjustment. Seat height adjustment.

DESCRIPTION	DIMENSIONS			SEAT HEIGHT
	W	D	H	
	IN mm	IN mm	IN mm	IN mm
 1960-2 High Back Knee-Tilter with adjustable Headrest. Sliding soft urethane (GL) armcaps. Tilt-tension adjustment with infinite position tilt-lock control. Pneumatic seat height adjustment with height/depth adjustable lumbar support. Manual seat depth adjustment. 1966-2 As above except with fully upholstered back.	25 635	24.5 622	48.5 1232	16-20 406-508
 1960-3 High Back Multi-Tilter with adjustable Headrest. Sliding soft urethane (GL) armcaps. Back angle adjustment. Tilt-tension adjustment with infinite position tilt-lock control. Pneumatic seat height adjustment with height/depth adjustable lumbar support. Manual seat depth adjustment. 1966-3 As above except with fully upholstered back.	25 635	24.5 622	48.5 1232	16.5-20.5 419-521
 1960-4 High Back Tilter with adjustable Headrest. Sliding soft urethane (GL) armcaps. Back angle adjustment. Tilt-tension adjustment with upright position tilt-lock control. Pneumatic seat height adjustment with height/depth adjustable lumbar support. Manual seat depth adjustment. 1966-4 As above except with fully upholstered back.	25 635	24.5 622	48.5 1232	16.5-20.5 419-521
 1961-2 High Back Knee-Tilter (no Headrest). Sliding soft urethane (GL) armcaps. Tilt-tension adjustment with infinite position tilt-lock control. Pneumatic seat height adjustment with height/depth adjustable lumbar support. Manual seat depth adjustment. 1967-2 As above except with fully upholstered back.	25 635	24.5 622	40 1016	16-20 406-508
 1961-3 High Back Multi-Tilter (no Headrest). Sliding soft urethane (GL) armcaps. Back angle adjustment. Tilt-tension adjustment with infinite position tilt-lock control. Pneumatic seat height adjustment with height/depth adjustable lumbar support. Manual seat depth adjustment. 1967-3 As above except with fully upholstered back.	25 635	24.5 622	40.5 1029	16.5-20.5 419-521

DESCRIPTION	DIMENSIONS			SEAT HEIGHT
	W	D	H	
	IN mm	IN mm	IN mm	IN mm
 1961-4 High Back Tilter. Sliding soft urethane (GL) armcaps. Back angle adjustment. Tilt-tension adjustment with upright position tilt-lock control. Manual seat depth adjustment. 1967-4 As above except with fully upholstered back.	25 635	24.5 622	40.5 1029	16.5-20.5 419-521
 1961-5 High Back Operator. Sliding soft urethane (GL) armcaps. Pneumatic seat height adjustment with height/depth adjustable lumbar support. Manual seat depth adjustment. 1967-5 As above except with fully upholstered back.	25 635	24.5 622	40.5 1029	16.5-20.5 419-521
 1961-6 High Back Task. Sliding soft urethane (GL) armcaps. Pneumatic seat height adjustment with height/depth adjustable lumbar support. Manual seat depth adjustment. 1967-6 As above except with fully upholstered back.	25 635	24.5 622	41 1041	17-22 432-559
 1962 Armchair. Black tubular steel cantilever base. Fixed height "T" arms with soft urethane armcaps. 1968 As above except with fully upholstered back.	25 635	24.5 622	40 1016	17.5 445
 1963 Armless side chair. Black tubular steel cantilever base. 1975 As above except with fully upholstered back.	19.5 495	24.5 622	40 1016	17.5 445

All models are available in Leather or Leather/Mock Leather. Add "LM" after first 4 digits of model #. See Price List for details.

Petite Seat Size is now available on all models. Check the current Price List for a complete listing of these models, as well as, a complete listing of all models available.



Global - Canada, The Global Group
 1350 Flint Rd., Downsview ON Canada M3J 2J7
 Sales & Marketing: Tel (1-877) 446-2251
 Customer Service: Fax (800) 361-3182
 Government Customer Service: Fax (416) 739-6319

Global - U.S.A.
 17 West Stow Road P.O. Box 562
 Marlton New Jersey U.S.A. 08053
 Tel (856) 596-3390 (800) 220-1900
 Fax (856) 596-5684

Global - International
 560 Supertest Road Downsview
 Ontario Canada M3J 2M6
 Tel (416) 661-3660 (800) 668-5870
 Fax (416) 667-1821

GGI Office Furniture (UK) Ltd.
 Global Way Darwen
 Lancashire UK BB3 0RW
 Tel +44(0) 1254 778500
 Fax +44(0) 1254 778519



Visit us on the World Wide Web at www.globaltotaloffice.com Offices throughout Canada, United States, United Kingdom, France, Australia and Brazil. Distribution around the world. A member of the Global Group. © 2012 ® Trade-Marks of GLOBAL TOTAL OFFICE. These products may be covered by one or more issued patents or pending patent applications in Canada, the U.S. and elsewhere. All intellectual property rights in applicable trademarks, patents and industrial designs are strictly reserved. Made in Canada. Specifications are correct at time of printing. Printed in Canada. Creative / Global Group Design Center 210612 12.0184