

**SAMSUNG**

**The more efficient the printer,  
the more efficient the business.**



Samsung Laser Printer **ProXpress**  
M4020 | 3820 | 3320 Series

# Businesses increasingly require high productivity and lower operating costs from their printers.

Fast, professional-quality printers with lower operating costs.

Most businesses are increasingly demanding high productivity and lower operating costs from their printers. Ease of use and printing versatility for a wide range of documents and presentations are also needed.

The Samsung ProXpress M4020 | 3820 | 3320 series printers are ideal for every business environment, with a full range of features designed to increase productivity and efficiency:

## High-Speed Performance with Professional Results

The ProXpress M4020 | 3820 | 3320 series printers have high print speeds of up to 42 ppm (pages per minute) with up to 256 MB memory for letter size documents<sup>1</sup>. Samsung's Rendering Engine for Clean Page (ReCP) technology produces sharp text and clear images on a range of media sizes and weights.

## Cost Efficiency

Eco features such as the One Touch Eco Button and the Easy Eco Driver plus job accounting features help reduce paper, toner and energy consumption. A wide range of toner cartridges<sup>2</sup> supporting different printing volumes aids in lowering the total cost of ownership (TCO).

## Versatility

Built-in duplex and convenient mobile printing capabilities come standard. The printers feature enterprise-level security, which offers greater control of user, document and network access.

## Ease of Use

Easy Printer Manager ensures smooth printer operation, wireless printing<sup>3</sup> ensures easy connectivity, and the built-in numeric keypad<sup>4</sup> enables easy and secure printing.

# Samsung high-performing printers deliver improved print quality and speed.

Print with exceptional speed and superior quality.

The Samsung ProXpress M4020 | 3820 | 3320 series helps businesses print complex documents on heavier media types without sacrificing processing and printing speed and professional-quality results.

## High-Speed Printing and Image Processing

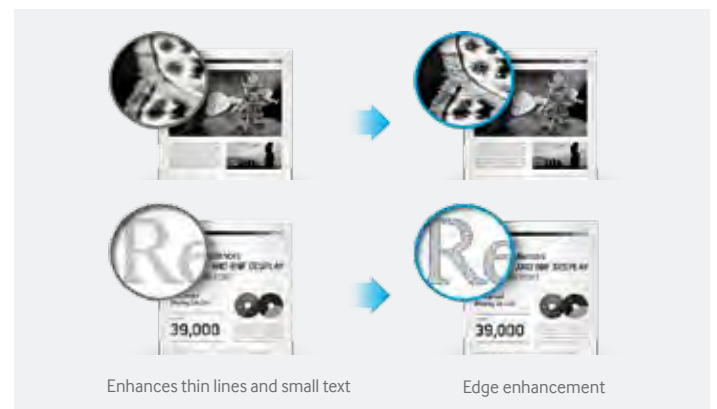
The robust ProXpress M4020 | 3820 | 3320 series features print speeds of up to 42 ppm, powered by a Cortex™-A5 core processor and up to 256 MB of memory<sup>1</sup>. High speed and performance enable businesses to accelerate document and image processing for increased efficiency.

 42 pages per minute



## Higher-Quality Print Output

ReCP technology improves the readability of printed documents by enhancing thin lines and sharpening the edges of negative text. The ProXpress M4020 | 3820 | 3320 series printers deliver sharp, solid prints with effective output resolutions of up to 1,200 x 1,200 dpi.



## Additional Printing Choices for Professional Documents

The printers' multipurpose trays support media of up to 58 lb. stock in weight, which offers more printing choices for professional documents. Numerous labels, cards and envelopes can be printed with ease using the multi-purpose tray<sup>5</sup>.

# Control costs by reducing toner and paper expenses.

Reduce operating expenses with economical features and solutions.



## One-touch Eco Button

Businesses can lower toner and paper usage with the One-touch Eco Button. Eco Mode automatically adjusts the print job and enables 2-up printing (two pages on the same side) and duplex printing (printing on both sides). Skipping blank pages and toner save mode are also enabled. These settings are easily adjusted from within the driver, and an administrator can choose to enforce Eco Mode for all users, saving their organization on costs.

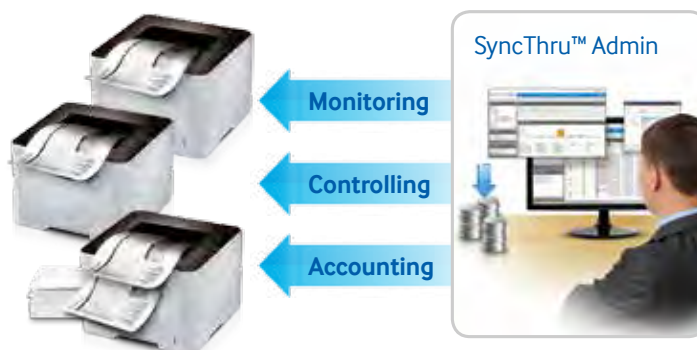


## Easy Eco Driver

The Easy Eco Driver, granted the 2012 Outstanding Achievement in Innovation award from Buyers Laboratory (BLI), can reduce toner use by up to 20%. Users have the option of removing unnecessary images, converting them from bitmap to sketch, or removing bold text which further reduces toner use.



Samsung Eco-Driver earned the 2012 "Outstanding Achievement in Innovation" Award from Buyers Lab



## Central Print Usage Control to Save More Resources

Central Print Usage Control, activated through the SyncThru™ Admin job accounting feature, enables managers to assign users to specific printers. Users can also be assigned quotas for the number of pages or copies they can make per printer.



## More Toner Options, More Choices for Cost Reduction

The ProXpress M4020 | 3820 | 3320 series offers diverse laser toner cartridge options, from standard-yield laser toner cartridges that typically yield 3,000 standard pages, to ultra-high yield laser toner cartridges that can yield 15,000 standard pages. They'll meet every business' need for reducing their cost per page<sup>2</sup>.

An integrated toner system contains the imaging unit and toner cartridge in one convenient package. This integrated toner system is the preferred choice for businesses with a heavier printing volume that requires a lower CPP and easier maintenance.

# Take advantage of flexible printing options that help optimize output.

Improve productivity with versatile features from mobility to security.



## Built-in Duplex Printing

The ProXpress M4020 | 3820 | 3320 series provides professional duplex (two-sided) printing for documents, brochures and reports, which helps save money and reduce paper use.



## Convenient Mobile Printing Optimized for Various Business Environments

The Samsung Mobile Print app allows users to wirelessly print directly from their mobile devices. By simply downloading the Mobile Print app from the Google® Play store for Android™ or the App Store for iOS®, users can access their devices without the need for additional drivers or complicated setup.

The app will detect any compatible Samsung printer or MFP located on the same Wi-Fi network, giving users access to the full range of the machine's functions. The ProXpress M4020 | 3820 | 3320 series<sup>3</sup> can handle most file types, including Microsoft Office documents, images and web pages.

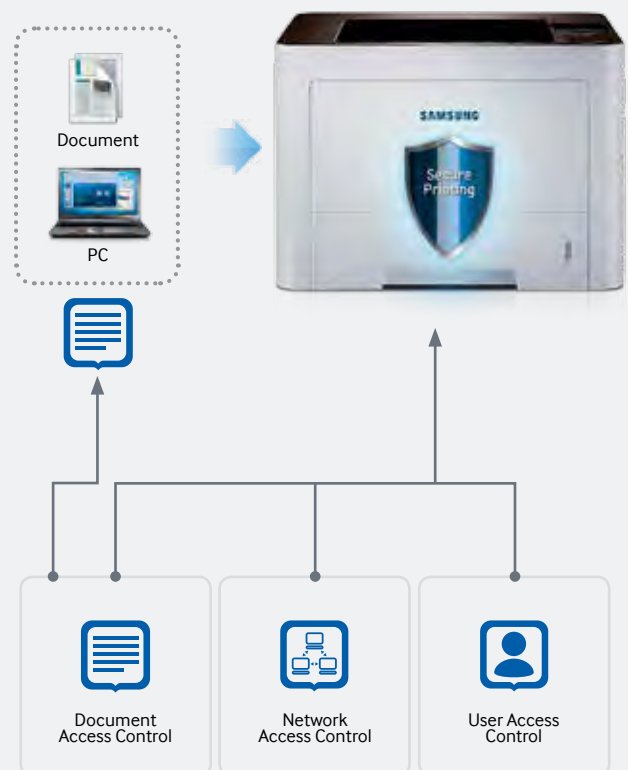
## Google® Cloud Print Ready

With the ProXpress M4020 | 3820 | 3320 series and Google Cloud Print, you can print from virtually anywhere, right out of the box. Google Cloud Print connects your printers to the Web, allowing you to print from mobile devices including smartphones, tablets, laptops and Chromebooks, from anywhere you have an Internet connection. You can even share your work or home printer with anyone you choose for added convenience.

## Enterprise-Level Document Security

Businesses produce numerous official documents containing confidential information, which requires highly secure printing. The ProXpress M4020 | 3820 | 3320 series offers greater control of users, document and network access with Samsung SyncThru™ Admin at the enterprise security level.

**With Samsung SyncThru™ Admin, businesses can administer, operate and manage print jobs securely.**



### Network Access Control

- SSL
- 802.1x
- IP/MAC Filtering
- All Network Port Control, IPSEC

### User Access Control

- LDAP/Local Authentication
- Authorization (Role) Manager
- Job and Access Log

### Document Access Control

- Data Encryption, Function Lock

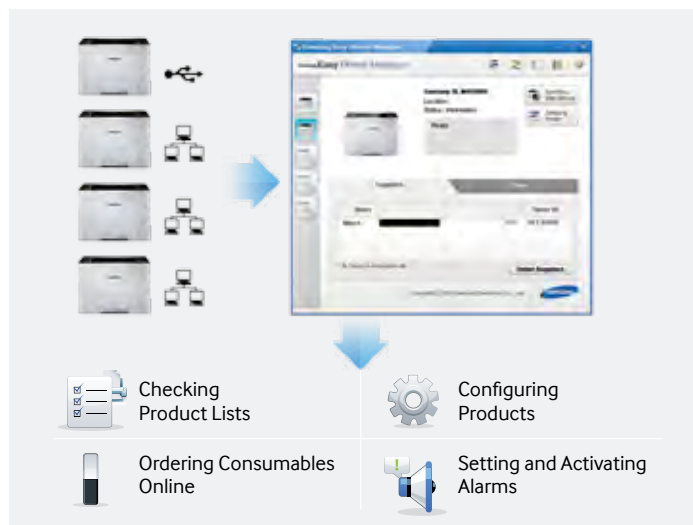


## Simplify print jobs with easy security management.

Streamline printing with easy-to-use design.

### Easy Printer Manager

The Easy Printer Manager helps companies remotely control settings, such as the One-touch Eco Button features. Multiple devices can be monitored and managed using the Easy Printer Manager. Businesses can also monitor printer status such as error messages, including paper empty, toner empty and paper jam alerts.



### Easy Secure Printing

The ProXpress M4020 | 3820 | 3320 series printers feature easy secure printing capability right out of the box. A user can elect to send a confidential or personal print job right from the driver, which can only be accessed by entering the PIN on the built-in keypad. Not only does this protect sensitive information, but it reduces the number of wasted prints if a user decides they no longer needed the print job, thereby lowering costs.



### Easy Connection

With the embedded Wi-Fi Direct connection on the ProXpress M3820DW, users don't need an access point or Wi-Fi router for mobile printing. Wi-Fi Direct allows up to five devices at a time to connect directly to the printer, making it easy to share with other users.



## Realize lower TCO with cost-efficient printers designed for speed and ease of use.

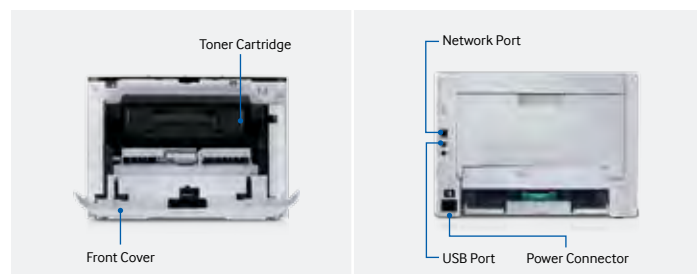
### The Intelligent Choice

The Samsung ProXpress M4020 | 3820 | 3320 series printers provide high performance with print speeds of up to 42 ppm<sup>1</sup>. The printers produce professional-quality printouts with more reliable paper handling, and support a range of media types up to 58 lbs.

Along with the enhanced print management, companies can achieve greater cost efficiency through lower toner costs based on higher cartridge yields, duplex printing and eco features.

The ProXpress M4020 | 3820 | 3320 series provides versatility with the built-in duplex printing, mobile printing and enterprise-level security features.

With convenient features such as Easy Printer Manager and secure printing, the ProXpress M4020 | 3820 | 3320 series helps improve the printing and management process for all types of businesses.



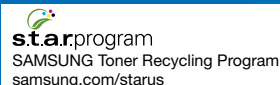
Features	Benefits
600MHz Cortex-A5 Core Processor and 256 MB Memory <sup>1</sup>	Boost print productivity with high quality results.
ReCP Technology	Produce sharp and clean print outputs with 1,200 x 1,200 dpi resolution.
Various Media Handling	Produce and handle more types of documents with support for heavy media.
One Touch Eco Button	Support cost and energy saving functions of 2-up/duplex printing, skipping blank pages, and toner saving mode.
Easy Eco Driver	Deliver cost savings by using less toner and paper.
Easy Printer Manager	Facilitate various printer management and monitoring.
SyncThru™ Admin	Secure printing jobs at the enterprise-security level.
Samsung Mobile Print	Print from mobile devices, including smart phones and tablets.

- 42ppm and 256MB of memory are available on M4020ND model only. 40ppm and 128MB of memory are available on M3820DW model only. 35ppm and 128MB of memory are available on M3320ND model only.
- 10,000 page yield toner cartridge is available on M3820 and M4020 series only. 15,000 page yield toner cartridge is available on M4020ND model only.
- Numeric key pad is available on M3820DW and M4020ND models only.
- Wireless printing is available on M3820DW model only.
- 50-sheet multipurpose tray is available on M3820 and M4020 series only. 1-sheet bypass available on M3320 series.

Specifications		M3320ND	M3820DW	M4020ND
Print				
Engine Speed		Up to 35 ppm in Letter	Up to 40 ppm in Letter	Up to 42 ppm in Letter
Resolution		Up to 1,200 x 1,200 dpi	Up to 1,200 x 1,200 dpi	Up to 1,200 x 1,200 dpi
FPOT (From Ready)		< 6.5 seconds	< 6.5 seconds	< 6.5 seconds
Duplex		Automatic	Automatic	Automatic
Emulation		SPL, PCL5e/6, PS3, IBM ProPrinter, EPSON (ESC/P), PDF v1.7	SPL, PCL5e/6, PS3, IBM ProPrinter, EPSON (ESC/P), PDF v1.7	SPL, PCL5e/6, PS3, IBM ProPrinter, EPSON (ESC/P), PDF v1.7
Paper Handling				
Input Capacity		250-sheet Cassette, 1-sheet Manual Bypass (771 sheets max)	250-sheet Cassette, 50-sheet Multipurpose Bypass Tray (820 sheets max)	250-sheet Cassette, 50-sheet Multipurpose Bypass Tray (820 sheets max)
Output Capacity		150 sheets face down	150 sheets face down	150 sheets face down
Media Size		3" x 5" ~ 8.5" x 14"	3" x 5" ~ 8.5" x 14"	3" x 5" ~ 8.5" x 14"
Media Types		Plain, Thick, Thin, Bond, Pre-printed, Recycled, Envelope, Transparency, Label, Cardstock, Cotton, Colored, Archive	Plain, Thick, Thin, Bond, Pre-printed, Recycled, Envelope, Transparency, Label, Cardstock, Cotton, Colored, Archive	Plain, Thick, Thin, Bond, Pre-printed, Recycled, Envelope, Transparency, Label, Cardstock, Cotton, Colored, Archive
Media Weight		16–58 lb.	16–58 lb.	16–58 lb.
General				
Processor		600 MHz	600 MHz	600 MHz
Memory		128 MB	128 MB (Max 512 MB)	256 MB (Max 512 MB)
OS Compatibility		Windows (32/64 bit) XP/2003/Vista/2008/7/2008 Server R2, Mac OS X 10.5~10.8, Various Linux, Various Unix, Citrix Presentation Server, Windows Terminal Services	Windows (32/64 bit) XP/2003/Vista/2008/7/2008 Server R2, Mac OS X 10.5~10.8, Various Linux, Various Unix, Citrix Presentation Server, Windows Terminal Services	Windows (32/64 bit) XP/2003/Vista/2008/7/2008 Server R2, Mac OS X 10.5~10.8, Various Linux, Various Unix, Citrix Presentation Server, Windows Terminal Services
Interface		Hi-Speed USB 2.0, Ethernet 10/100 Base TX	Hi-Speed USB 2.0, Ethernet 10/100 Base TX, Wireless 802.11b/g/n, Wi-Fi Direct	Hi-Speed USB 2.0, Gigabit Ethernet
User Interface		3 Status LEDs, Eco, Power, Configuration and Cancel Keys	2-line LCD, 8 Status LEDs, Numeric Keypad, Function Keys, Soft Power	2-line LCD, 8 Status LEDs, Numeric Keypad, Function Keys, Soft Power
Monthly Duty Cycle		50,000 pages per month	80,000 pages per month	100,000 pages per month
Noise Level		<55 dBA while Printing	<57 dBA while Printing	<57 dBA while Printing
Power Consumption		700W Printing, 10W Ready, 1.1W Power Save, 1.7 kWh TEC	700W Printing, 10W Ready, 1.6W Power Save, 2.1 kWh TEC	700W Printing, 10W Ready, 1.1W Power Save, 2.0 kWh TEC
Unit Dimension (W x D x H)		14.4" x 14.4" x 10.3"	14.4" x 14.4" x 10.3"	14.4" x 14.4" x 10.3"
Box Dimensions (W x D x H)		17.7" x 17.7" x 15.9"	17.7" x 17.7" x 15.9"	17.7" x 17.7" x 15.9"
Unit Weight		21.7 lbs.	22.4 lbs.	22.4 lbs.
Box Weight		25.9 lbs.	26.9 lbs.	26.9 lbs.
Consumables				
Toner System		All-in-One Integrated Cartridge System	All-in-One Integrated Cartridge System	All-in-One Integrated Cartridge System
Toner	Starter Toner	Full Standard Toner 3,000 Page Yield	Full Standard Toner 3,000 Page Yield	Full Standard Toner 3,000 Page Yield
	Toner Models and Yields	Standard 3,000 Page Yield (MLT-D203S) High Yield 5,000 Page Yield (MLT-D203L)	Standard 3,000 Page Yield (MLT-D203S) High Yield 5,000 Page Yield (MLT-D203L) Extra High Yield 10,000 Page Yield (MLT-D203E)	Standard 3,000 Page Yield (MLT-D203S) High Yield 5,000 Page Yield (MLT-D203L) Extra High Yield 10,000 Page Yield (MLT-D203E) Ultra High Yield 15,000 Page Yield (MLT-D203U)
	Toner Metrics	Declared Cartridge Yield in Accordance with ISO/IEC 19752	Declared Cartridge Yield in Accordance with ISO/IEC 19752	Declared Cartridge Yield in Accordance with ISO/IEC 19752
Accessories				
Included		Power Cord, Full Standard Yield Toner, Driver/Software CD with Digital User Manual, Warranty Card, Quick Installation Guide	Power Cord, Full Standard Yield Toner, Driver/Software CD with Digital User Manual, Warranty Card, Quick Installation Guide, Hi-Speed 2.0 USB Cable	Power Cord, Full Standard Yield Toner, Driver/Software CD with Digital User Manual, Warranty Card, Quick Installation Guide

Follow us:  @SamsungBizUSA |  youtube.com/samsungbizusa

Product Support: 1-800-SAMSUNG | 1-866-SAM4BIZ | [samsung.com/prINTER](http://samsung.com/prINTER)



©2013 Samsung Electronics America, Inc. Samsung is a registered mark of Samsung Electronics Corp., Ltd. Specifications and designs are subject to change without notice. Non-metric weights and measurements are approximate. All other brand, product, service names and logos are trademarks and/or registered trademarks of their respective manufacturers and companies. Simulated screen images. See [samsung.com](http://samsung.com) for detailed information. Printed in USA on 50% recycled (30% post-consumer waste) paper using soy inks. PNT-M402038203320-JUN13T

