

Thermal Server Coffee Brewer

Features

Thermal Server Coffee Brewer

- Brews 3.8 gallons (14.4 litres) of perfect coffee per hour.
- Convenient thermal servers keep coffee hot for hours.
- Thermal servers are easily transported to remote meeting rooms, breakfast bars, etc.
- Pour-over model available (CW15-TS).
- Pour-over feature included on automatic models.
- Internal components are constructed from stainless steel.
- Hot water faucet available.
- SplashGard® funnel deflects hot liquids away from the hand.
- Holds up to 4" cup.



Model CWTF TS with Thermal Server

(Thermal Server not included)

Dimensions: 27.6" H x 9" W x 18.5" D
(70.1cm H x 22.9cm W x 47cm D)

For current specification sheets and other information, go to www.bunn.com.

Related Products

Easy Clear® EQ-17-TL

Product No. : 30200.1000

Dimensions:

12⁷/₁₆" H x 2¹/₂" W x 3" D
31.6 cm H x 6.35 cm W x 7.62 cm D



Easy Clear® ED-17-TL

Product No. : 30201.1001

Dimensions:

8¹/₄" H x 2⁵/₁₆" Dia.
20.95 cm H x 5.87 cm Dia.



Paper Filter Pack

Product No. : 20115.6000

Packed per case: 1,000

Dimensions:

4¹/₄" Base x 2³/₄" Sidewall
10.8 cm Base x 6.98 cm Sidewall



Thermal Server Booster*

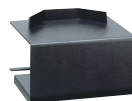
Product No. : 18010.6000

Capacity: 1 Thermal Server

Shipping Weight: 2 lbs.

Dimensions: 6" H x 9¹/₄" W x 8¹/₄" D

15.2 cm H x 23.5 cm W x 21 cm D



Thermal Server-Black

Product No. :

Glass Liner 23300.6101

S/S Liner 23300.6120

Capacity: 84 oz. (2.5 L)



*To be used in conjunction with Thermal Server
without base. Product No. : 23300.6105 & 23300.6124

Model

Agency Listing

CW TS



CWT TS



CWTF TS



Dimensions & Specifications

CANADA



Model	Product #	Volts	Amps	Tank Htr Watts	Total Watts	Capacity per hour	Cubic ft ³ /m ³	Weight lbs/kg	Cord Attached
CW15-TS (Pourover)	23000.6000	120	12.1	1450	1450	3.8 gal/14.4 liter	5.1 / .14	35 / 15.9	Yes†
CWT15-TS	23000.6006	120	12.1	1450	1450	3.8 gal/14.4 liter	5.1 / .14	37 / 16.8	Yes†
CWTF15-TS*	23000.6012	120	12.1	1450	1450	3.8 gal/14.4 liter	5.1 / .14	40 / 18.1	Yes†
CWTF35-TS*	23000.6016	120/240	14.6	3500	3500	7.5 gal/20.8 liter	5.1 / .14	41 / 18.6	No

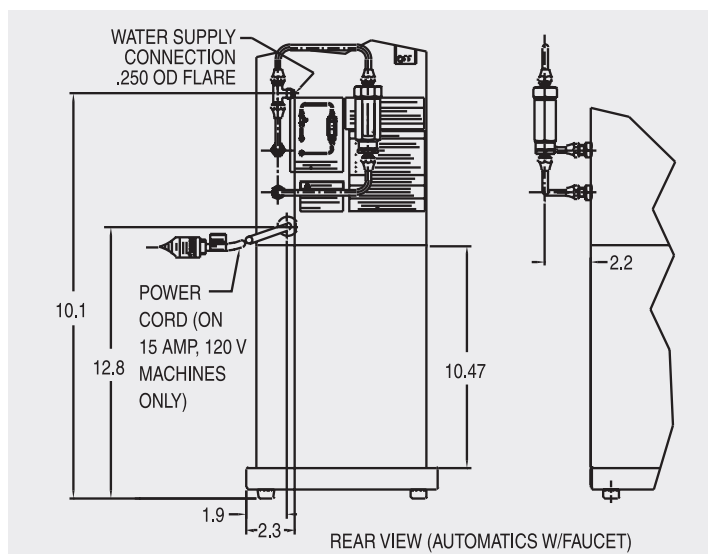
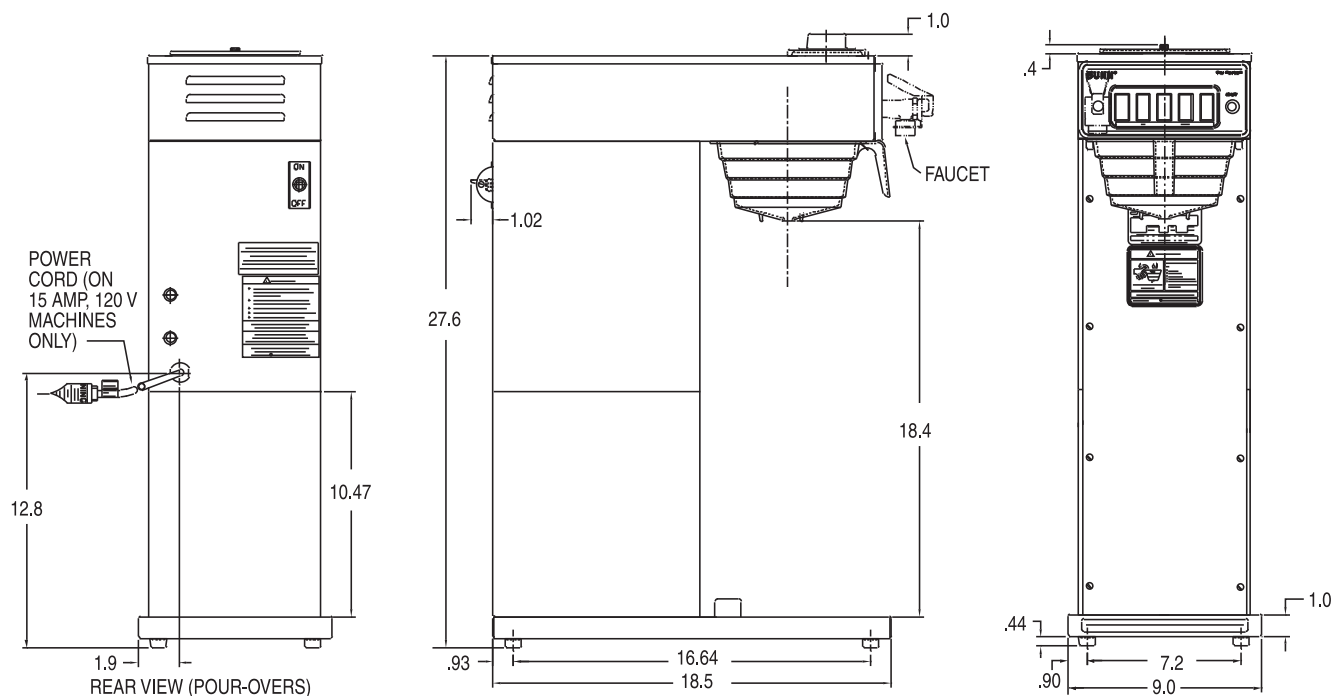
*Includes faucet. †Power cord (NEMA 5-15P) 15 Amp-120V machine only.

Brewing capacity: based upon incoming water temp of 60°F (140°F rise) per 1/2 gallon brew time of 4 minutes.

Models listed as 120/208V or 120/240V must be connected to 208V or 240V electrical service respectively. Please refer to the installation manual.

Electrical: Model 15 has attached cordset and requires 2-wire plus grounded service rated 120V, single phase, 60Hz.

Model 35 requires 3-wire, grounded service rated 120/208 or 120/240V, single phase, 60Hz.



Bunn-O-Matic Corporation of Canada - 280 Industrial Pkwy. S. Aurora, Ontario L4G 3T9 • 905-841-2866 • Fax 905-841-2775 • www.bunn.com

BUNN® practices continuous product research and improvement. We reserve the right to change specifications and product design without notice. Such revisions do not entitle the buyer to corresponding changes, improvements, additions or replacements for previously purchased equipment.

All dimensions shown in inches. Bunn Corporation owns all copyrights relating to materials in this publication. Please contact Bunn Corporation to request permission to reproduce any portion of this publication.